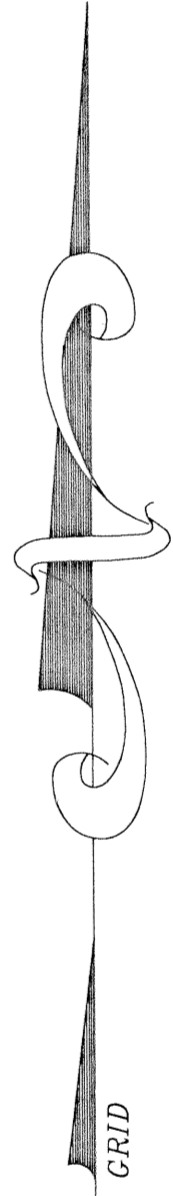
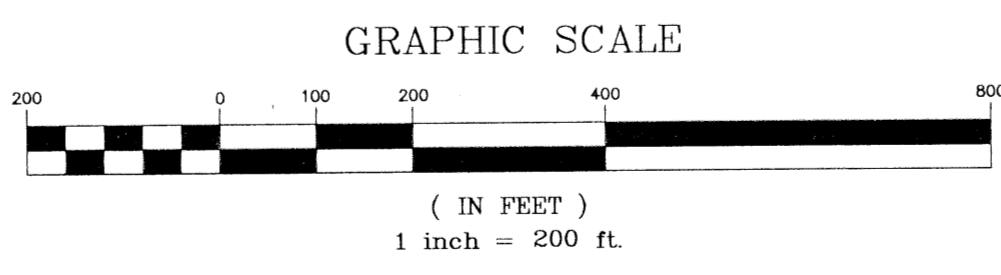
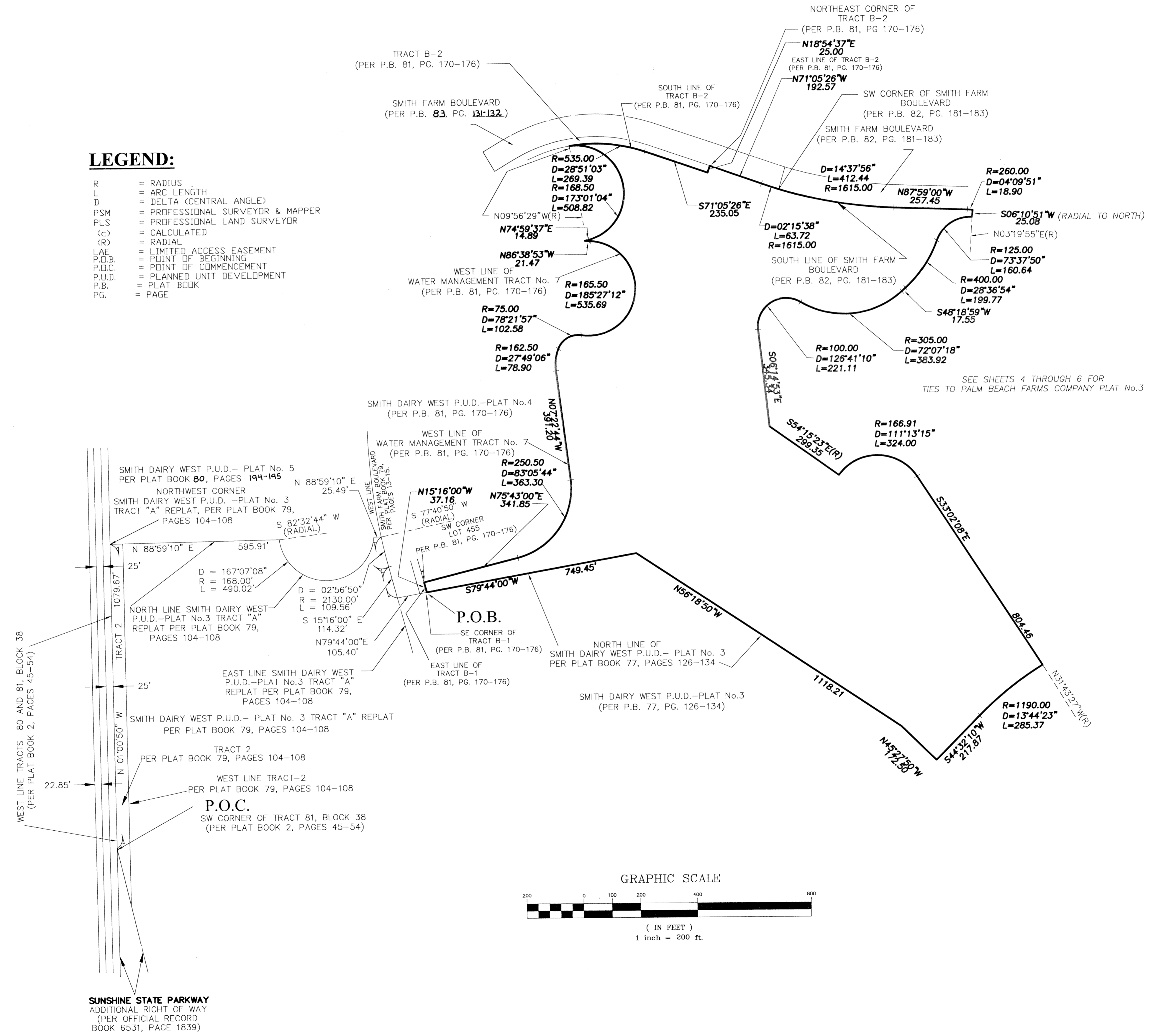


SMITH DAIRY WEST P.U.D. - PLAT No. 7, PHASE II
 BEING A REPLAT OF ALL OF WATER MANAGEMENT TRACT No. 7, AS SHOWN ON
 THE PLAT OF SMITH DAIRY WEST P.U.D. PLAT No. 4, AS RECORDED IN PLAT
 BOOK 81, PAGES 170-176 OF THE PUBLIC RECORDS OF PALM BEACH
 COUNTY, FLORIDA AND A PORTION OF SECTION 4, TOWNSHIP 45 SOUTH,
 RANGE 42 EAST, PALM BEACH COUNTY, FLORIDA, SAID PORTION ALSO
 BEING PART OF BLOCK 38 OF PALM BEACH FARMS COMPANY PLAT No. 3,
 AS RECORDED IN PLAT BOOK 2, PAGES 45 THROUGH 54
 OF SAID PUBLIC RECORDS

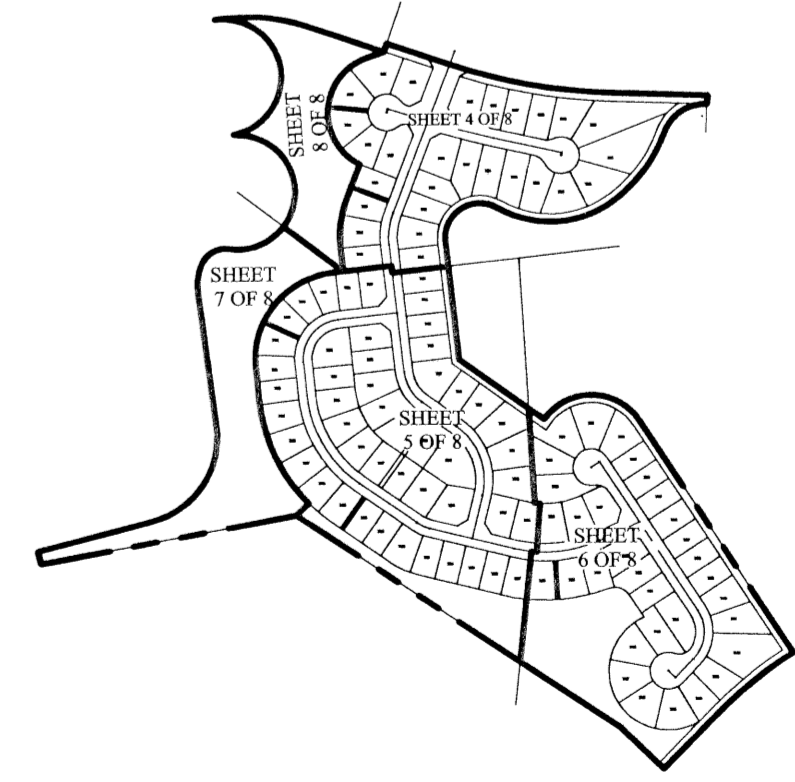
SHEET 3 OF 8
 AUGUST 1998

LEGEND:

- R = RADIUS
- L = ARC LENGTH
- D = DELTA (CENTRAL ANGLE)
- PSM = PROFESSIONAL SURVEYOR & MAPPER
- PLS = PROFESSIONAL LAND SURVEYOR
- (c) = CALCULATED
- (R) = RADIAL
- LAE = LIMITED ACCESS EASEMENT
- P.O.B. = POINT OF BEGINNING
- P.O.C. = POINT OF COMMENCEMENT
- P.U.D. = PLANNED UNIT DEVELOPMENT
- P.B. = PLAT BOOK
- PG. = PAGE



SHEET INDEX



SMITH DAIRY WEST
 PLAT # 7
 FLOOD MAP # 170A
 ZONING PUD
 ZIP CODE 33467
 PLAT # 94-77
 TRACT # 842
 PUD NAME Smith Dairy West

| | |
|---|---|
| SCALE: 1"=200' | NICK MILLER, INC. Surveying & Mapping Consultants |
| DATE: AUGUST 1998 | |
| SMITH DAIRY WEST P.U.D. - PLAT No. 7, PHASE II | |
| 2560 RCA Blvd. Suite 105 Palm Beach Gardens, Florida 33410 (561) 627-5200 D.B.P.R. Business License No. 4318 | DRAWING NUMBER 94014CR |